

## Dean Office

Sanjay Gandhi Postgraduate Institute of Medical Sciences, Lucknow, was established by an Act of State Legislatures of Uttar Pradesh in the year 1983. The Institute is a corporate body and is functioning as University established under state Act with power to grant medical degrees, diplomas and other academic distinctions and titles. The objectives of the Institute is to function as a referral hospital of tertiary medical care and to provide postgraduate teaching and conduct research in existing specialties and others that are yet to emerge.

### **Role and Responsibilities of the Dean:**

Through the SGPGIMS Act 1983 and Regulations 2011 the Powers and duties of the Dean were formulated for smoothly running the above Academic courses.

Power and duties of the Dean: The Dean of the Institute shall have the following powers and shall perform the following functions.

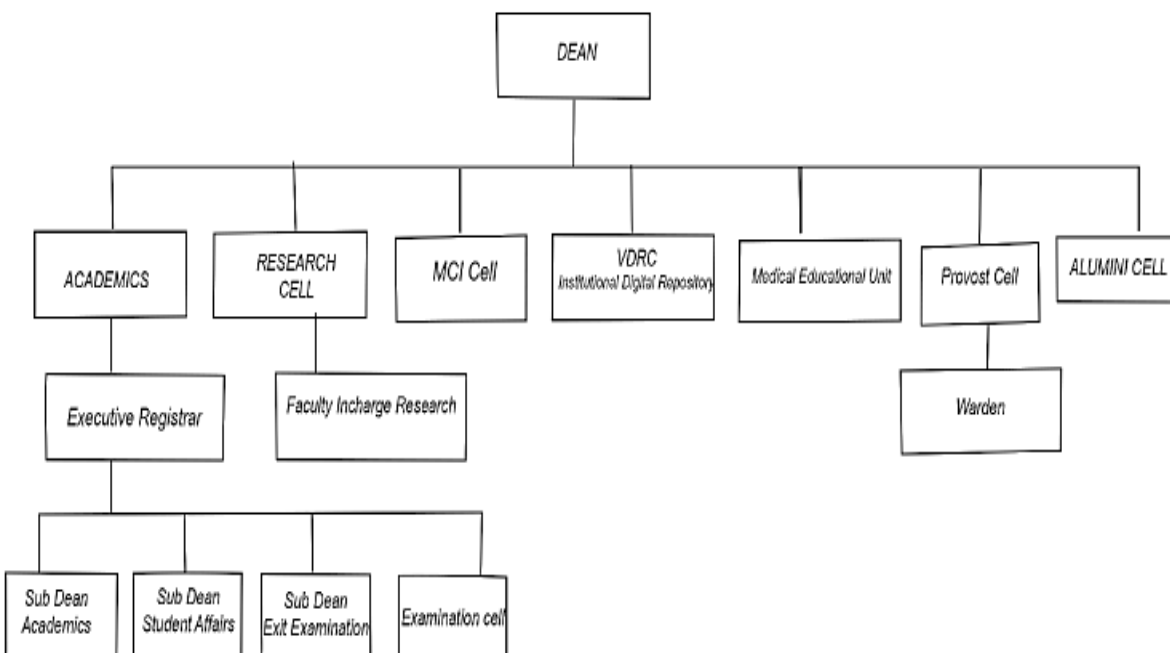
- (i) He will be responsible to the Director for the execution of all programmes in connection with teaching, training and research at the Institute.
- (ii) He will subject to the control of the Director, be in-charge of all academic activities.
- (iii) He will coordinate all student admissions and all examinations.
- (iv) He will forward recommendations for academic prizes, awards etc. to the Director.
- (v) He will coordinate the work related to research, under the control and guidance of the Director.
- (vi) He will route research proposals to appropriate authorities, provided that proposals requiring funds from international organizations shall be so routed after approval of the Director.
- (vii) He will forward all other academic matters, including proposals for conduct of academic functions relating to various departments to the Director with his recommendations.
- (viii) He will be responsible for all work related to award of scholarships, stipends and free ships to the students and trainees.
- (ix) He will forward to the Director all matters for the approval of the Academic Board.
- (x) He will be responsible for discipline amongst students and will have the power to punish them for indiscipline and the Director will be the appellate authority for such action.
- (xi) He will be responsible for collaborative research and academic activities in various academic departments.
- (xii) He will exercise such financial powers as may be assigned to him by the Governing Body.
- (xiii) He will be invited to all statutory bodies like Institute Body, Governing Body and Finance Committee.
- (xiv) He will with the approval of the Director, issue notices convening meetings of the Academic Board and will keep the minutes of all such meetings.
- (xv) He will perform such other duties, and exercise such other powers as have been laid down in the regulations including schedules I & II or as may be assigned to him from time to time by the Director.

**Courses run by the Institute:**

1.	Super-specialty Courses	<b>DM Courses:</b> Clinical Immunology & Rheumatology, Gastroenterology, Pediatric Gastroenterology, Clinical Hematology, Critical Care Medicine, Medical Genetics, Endocrinology, Cardiology, Neurology, Nephrology, Pulmonary Medicine, Neonatology,
		<b>M.Ch. Courses:</b> Surgical Gastroenterology, Endocrine Surgery, Cardio-vascular & Thoracic Surgery, Neurosurgery, Urology, Pediatric Surgery, Plastic & Reconstructive Surgery
2.	Ph.D. Courses	In all the Departments
3.	Postgraduate courses	<b>MD Courses:</b> Anesthesiology, Nuclear Medicine, Radiotherapy, Transfusion Medicine, Microbiology, Pathology & Radiodiagnosis. For Starting MS Ophthalmology and MD Emergency Medicine the matter is under consideration, NMC.
4.	PDAF (2 Years ) Post-doctoral Courses.	<b>Department of Anaesthesiology:</b> Intensive Care Medicine Cardio-vascular and Thoracic Anaesthesia Organ transplant Anaesthesia Neuro Anaesthesia and Neuro Critical Care. Pain and Palliative Care Medicine
5.	PDCC (1 Year) Postdoctoral Certificate Courses.	Hemato-Oncology Pediatric Hematology
		Hemato-Pathology
		Lab. Immunology
		Critical Care Medicine
		Emergency Medicine
		Pediatric Endocrinology
		Maternal and Fetal Medicine
		Clinical Molecular Genetics & Genomics
		Infectious Disease
		Neonatology
		Neuro-Otology
		Correlative Imaging Radionuclide Therapy
		Ophthalmology
		Pediatric Gastroenterology
		Renal Pathology
		Interventional Pulmonary
		Neuro-radiology

		Gastro-radiology Vascular Radiology
		Apheresis Technology & Blood Component Therapy
		Breast Surgery
6.	Undergraduate	<b>Collage of Nursing</b> B.Sc. Nursing
7.	Undergraduate & Postgraduate courses	<b>College of Medical Technology &amp; Allied Health Sciences</b> B.Sc. in Operation Theatre Technology B.Sc. in Renal Dialysis Technology B.Sc. in Anesthesia Technology B.Sc. in Imaging Technology (Radio-diagnosis) B.Sc. in Radiotherapy Technology B.Sc. in Respiratory Care Technology B.Sc. in Medical Laboratory Technology (Hematology) B.Sc. in Perfusion Technology Bachelor of Physiotherapy (B.P.T) <b>M.Sc. Courses:</b> M.Sc. in Medical Bio-technology M.Sc. in Medical Laboratory Technology (Transfusion Medicine) M.Sc. in Medical Laboratory Technology (Medical Virology) M.Sc. Medical Genetics M.Sc. Molecular Medicine & Biotechnology
8.	Postgraduate course	MHA (Master in Hospital Administration)
9.	School of Telemedicine & Biomedical Informatics : One year Diploma Course	Telemedicine and Digital Health
10.	Short term and Long term training sponsored by Government or other agencies	In all the Departments.

## ORGANISATION CHART



The Dean's office is performing the above activities for smoothly working of Academic Section, Research Cell, Ethics Cell, Examination Cell, Provost Office, VDRC Cell, Alumnae Cell, Medical Education Unit and MCI Cell with the help of the following Faculty officers with their duties assigned in Regulations 2011 or through the statutory bodies i.e. Academic Board/Governing Body.

### Academic Section:

Executive Registrar ----- Sub-Dean (Academics)----Sub-Dean (Student Affairs) and Sub-Dean (Examination)

**Faculty (In-charge) Examination:** Organizing all the entrance examinations of the Institute.

The Academic Sections deals establishment of all above students, conduct entrance and exit examinations of all above courses except MD/DM/M.Ch. for which candidates are coming through All India NEET examinations as per the norms of Government of India/Govt. of UP.

Faculty (In-charge) Research  
Research Cell

Faculty In-charge Ethics  
Ethics Cell

**Faculty (In-charge) Research:** The Research Cell deals with all the Intramural and Extramural Research Projects. The Research Cell conducts Research Committee, and helping the Dean and Director for smoothly running the intramural and extramural research projects. The Research Cell also looks after

the establishment of Ph.D. scholars and training requests comes through sponsored candidates etc. On the eve of Foundation Day, the Research Cell has organized first Research Day on December 13, 2020.

**Faculty In-charge Ethics:** The Ethics Cell deals and ethics related issues and conduct Institutional Ethics Committee meeting for clearing the projects from ethics point of view along with the thesis proposals of MD/DM/M.Ch./Ph.D. students where issues are involved.

**Provost Cell:** The Dean's office looking after the activities of allotment of hostel and other hostel related activities i.e. students mess and other sports activities etc. with the help of Provost and Wardens.

**Virtual Data Research Cell (VDRC)** VDRC was created in the year 2013 with the objective of creating a Institutional Knowledge Repository where in all the Publications and PhD theses in PDF of the institute is stored in digital format in the Server located in School of Telemedicine & Biomedical Informatics and is also linked in the National Digital Library portal hosted by IIT Kharagpur and is a content partner with NDIL, an initiative of Ministry of Human Resource Development (MHRD), Govt. of India

The details can be viewed by clicking the link <http://sgpgivdrc.nmcn.in:8080/xmlui>

**MCI Cell:** The Dean's office is looking after the MCI Cell. The MCI cell deals with all related issues like starting of new courses, organizing MCI inspector visit for renewal of degrees, recognition of degrees etc. as per the norms of National Medical Commission.

**Medical Education Unit:** The Medical Education Unit under the supervision of Prof. Amita Aggarwal, Head Department of Clinical Immunology & Rheumatology works to fulfill the NMC requirement, however, it is envisaged that it will help with continuing medical education and professional development of students and faculty. In addition, the Medical Education Unit is also working to train our faculty and students relating to how to get started with Research Projects and How to convert data to Publications. In addition, the Medical Education Unit will also try to establish Basic Medical Education courses, mandated by NMC.

**01-02 Courses:** The Institute is continuously conducting their 01/02 course mandatory for all MD/DM/M.Ch./PDCC/Ph.D students under the supervision of Faculty In-charge -01-02 courses Prof. Amita Agrawal.

**Alumnae Cell:** The Institute has created an Alumnae Cell under the Chairmanship of Dean. Prof. Punita Lal, is Nodal Officer of Alumnae Cell. For collecting the data of all alumni the alumni cell has created an e-mail id [alumnisgpgi@gmail.com](mailto:alumnisgpgi@gmail.com). All the alumnae working in India and abroad are giving their data through the above e-mail. On the eve of Foundation Day i.e. December 13, 2020 the first online Alumni Day Meet was organized. 5 speakers (senior and renowned alumni) delivered talk during the meet which was attended by alumni and faculty through webconference.

**e-Learning / Online Teaching Support, from School of Telemedicine and Biomedical Informatics:**

Due to Covid-19 pandemic the School of Telemedicine and Bio-medical Informatics has provided e-learning and video-conferencing support to all the departments for conducting their classes and examinations using Telemedicine infrastructure. User access to each students of College of Nursing and College of Medical Technology and Allied Health Sciences, were given and teachers sitting at STBMI complex imparted the course material to the students. Sr. Residents DM/M.Ch./MD/Ph.D. teaching / case discussion were also imparted through online using Telemedicine infrastructure. A total of 1200 sessions and 68,699 participants benefited.